

Important Points

- Charges will appear on the February 2008 utility bill.
- 1 ERU = 3,000 square feet of impervious surfaces for non-residential properties.
- Residential units are 1 ERU each.
- 2008 Fee is \$3.50 per month per ERU.

For more information contact:

City of Troy

Engineering Division

100 S. Market Street

Troy, Ohio 45373

(937) 339-2641

www.troyohio.gov

Email deborah.swan@troyohio.gov



City of Troy
Engineering Division
Deborah J. Swan, P.E.
City Engineer
100 S. Market Street
Troy, Ohio 45373

Phone: 937-339-2641
Fax: 937-440-9423
Email: deborah.swan@troyohio.gov



TROY STORMWATER UTILITY:

A federal unfunded mandate and opportunity for change



Protecting the environment . .

Safeguarding Health and Safety

Correcting our stormwater concerns

City of Troy
Engineering Division
Deborah J. Swan, P.E.
City Engineer

Tel: 937 339 2641



Stormwater Management Program

WHY IS THIS PROGRAM NECESSARY?

The program is necessary to protect and improve the quality of our waterways, the U.S. EPA and the Ohio EPA has issued regulations that require most communities like Troy to reduce the pollutants in the stormwater runoff from impervious surfaces. For years, the City has controlled the quantity of runoff and will now also be controlling the quality of the runoff. The City will work with contractors during the construction on properties, but there is more that we must do to improve water quality.

UNFUNDED MANDATE

Because Federal and State funding is not available, the City of Troy residents and businesses will have to absorb the costs of meeting the new regulations and for maintenance of the existing storm water infrastructure.

WHO WILL HAVE TO PAY?

All property owners, including schools, churches, businesses, industries and residents will be required to pay. No property is exempt from the fee.

WHEN WILL YOU BE BILLED?

The new storm water charge will first appear on the February 2008 utility bill and on each monthly bill thereafter.

What will homeowners pay?

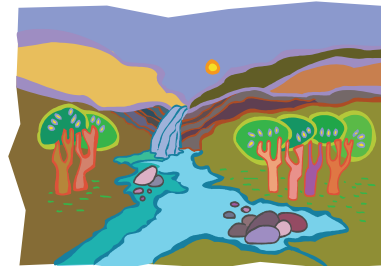
All residential units (single-family, two-family, apartment or condominium unit) will pay a fee of \$3.50 per month for 2008. That fee will appear on your monthly utility bill beginning in February 2008. Each year in January, that rate will be adjusted for anticipated inflation.

What will non-residential property owners pay?

Non-residential properties (industries, businesses, churches and schools) will pay a fee based on the amount of impervious area contained on the property that is then compared to a typical residential property through the Equivalent Residential Unit (ERU). Impervious areas include pavement, rooftops, driveways, parking lots, gravel areas, private sidewalk, and other hard surfaces that prevent rain water from soaking into the soil. The City has determined that the typical residential unit has 3,000 square feet of impervious area, so 1 ERU = 3,000 sq. ft. of impervious area. A business property that contains the impervious area equal to 10 residential homes will be required to pay 10 times the rate of one residential home. For example a property with 17,350 square feet of impervious area would equate to 6 ERUs ($17350/3000 = 5.8$ rounds to 6) This non-residential property owner would pay a monthly fee of $6 \times \$3.50$ or \$21 per month.

NON-RESIDENTIAL CREDITS PROGRAM

Non-residential properties may reduce their monthly stormwater fee through the implementation of significant storm water controls on their properties where their controls affect regional stormwater runoff in a positive way. For a copy of the ERU credit application please visit our website at <http://www.troyohio.gov>.



What Services will be Provided?

The revenue created from the new storm water fee will only be used to comply with the federal regulations, improve water quality and begin to upgrade the stormwater infrastructure in our city. Money will be used to:

- Catch Basin Maintenance and Repair
- Leaf Collection
- Street Sweeping
- Ditch Maintenance in various locations throughout the city
- Develop plans to properly address storm water runoff throughout the existing storm water system
- Comply with federal and state regulations
- Stormwater Infrastructure improvements

Better stormwater management practices will improve the water quality in the City of Troy, creating a better environment for our citizens and providing future generations with the opportunity to enjoy the Great Miami River while managing the effects of development in the City.

City of Troy
Engineering Division
Deborah J. Swan, P.E.
City Engineer

Phone: 937-339-2641
Fax: 937-440-9423
Email: deborah.swan@troyohio.gov